

# Photometric Test Report

Report Number: *MCA-12-05-3165*  
Test Number: *MCA-12-05-3165*  
Test Distance: *25.000m*

Report Date: *2012-05-12*  
Test Date: *2012-05-12*  
Test Temperature: *22C*

Part Number: *CTL-TPX12E3065*  
Part Name: *LED UTILITY LAMP-CTL-TPX12E3065*  
Customer: *VISIONX*  
Vehicle Side: *Not Handed*

Description: *SAMPLE 1*

Working Standard: *LED-SIGNAL*  
Bulb Type: *LED-SIGNAL*  
Voltage Set: *13.498 V*

Bulb Make: *LED-SIGNAL*  
Filament: *LED*  
Current Set: *4.9840 A*

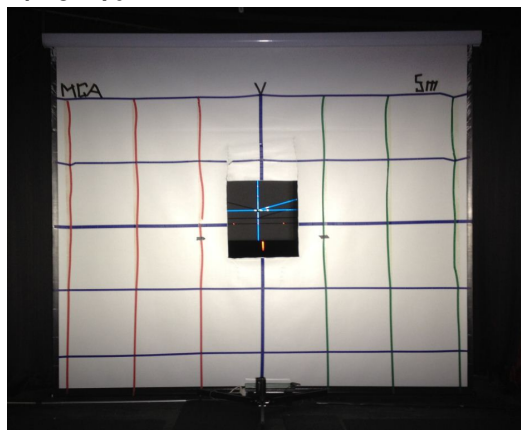
Tested for: *Compliance to the photometric requirements of:  
IsoLux Scan*

## Report Summary

The test item complies with all photometric requirements of  
IsoLux Scan

Total Uncertainty of Measurement (as estimated to the 95% confidence limit):

Angle:  $\pm 0.01^\circ$   
Intensity:  $\pm 5\%$   
Voltage:  $\pm 0.1\%$   
Current:  $\pm 0.1\%$



Tested By: \_\_\_\_\_ Checked By: \_\_\_\_\_ Approved By: \_\_\_\_\_

\*\* SYSTEM GENERATED REPORT

Page 1 of 2

Report Number: *MCA-12-05-3165*  
Part Number: *CTL-TPX12E3065*

Report Date: *2012-05-12*  
Customer: *VISIONX*

Regulation: *IsoLux Scan*

## *IsoLux Scan*

### *Test Scan 1*

Max Intensity = *14450 cd*  
Min Intensity = *0.0054 cd*  
Max Allowed = *N/A*

Scan Name: *IsoLux*  
Max at H = *0.50 L°*  
Min at H = *72.50 L°*  
Min Allowed = *N/A*

Max at V = *H°*  
Min at V = *27.00 U°*  
Result = *PASS*

### *Test Scan 2*

Max Intensity = *14030 cd*  
Min Intensity = *0.0436 cd*  
Max Allowed = *N/A*

Scan Name: *IES 1*  
Max at H = *V°*  
Min at H = *90.00 R°*  
Min Allowed = *N/A*

Max at V = *H°*  
Min at V = *H°*  
Result = *PASS*

### *Test Scan 3*

Max Intensity = *0.8319 cd*  
Min Intensity = *0.8319 cd*  
Max Allowed = *N/A*

Scan Name: *IES 2*  
Max at H = *V°*  
Min at H = *V°*  
Min Allowed = *N/A*

Max at V = *90.00 U°*  
Min at V = *90.00 U°*  
Result = *PASS*

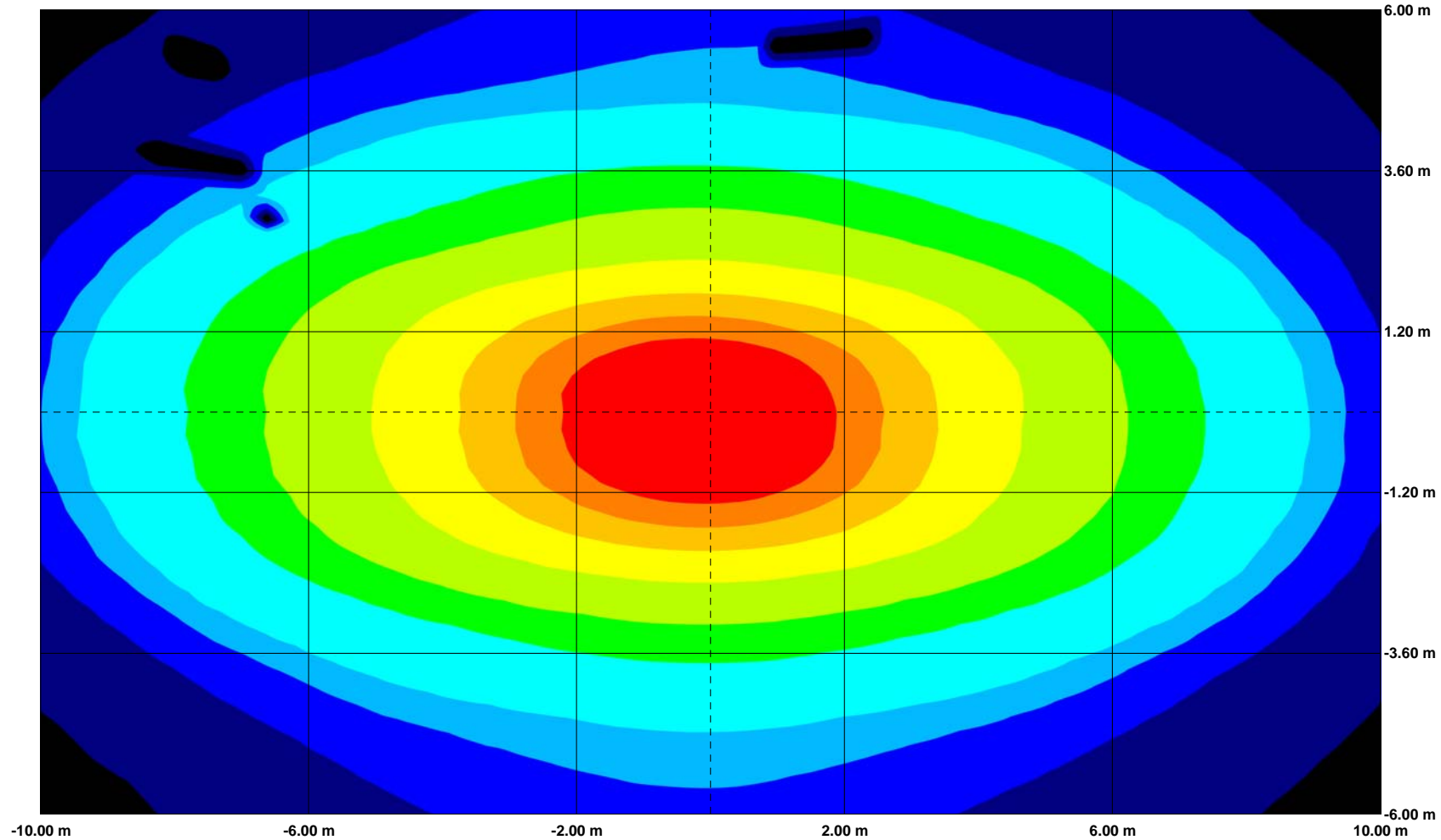
Tested By: \_\_\_\_\_ Checked By: \_\_\_\_\_ Approved By: \_\_\_\_\_

Page 2 of 2

Report Number: MCA-12-05-3165  
 Part Number: CTL-TPX12E3065  
 Part Number: CTL-TPX12E3065  
 Part Name: LED UTILITY LAMP-CTL-TPX12E3065  
 Bulb Type: LED-SIGNAL

Report Date: 2012-05-12  
 Customer: VISIONX  
 Emax (Lux): 144.47  
 Coordinate: -0.096, -0.007  
 Luminous Flux (lm): 3675.0

IsoLux - Illuminance in Vertical Plane - Parking Lamp

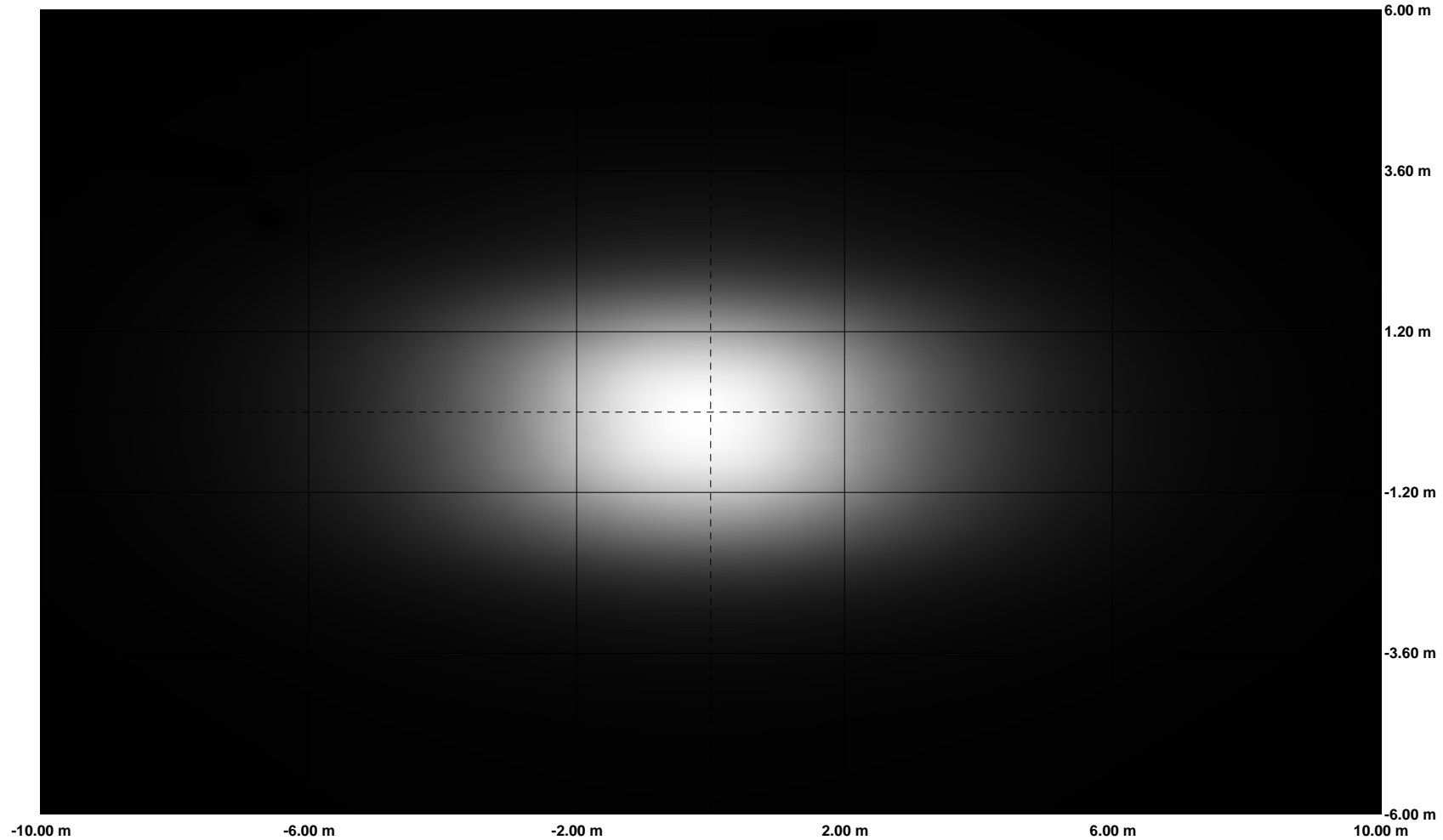


Tested By: \_\_\_\_\_ Checked By: \_\_\_\_\_ Approved By: \_\_\_\_\_

Report Number: MCA-12-05-3165  
 Part Number: CTL-TPX12E3065  
 Part Number: CTL-TPX12E3065  
 Part Name: LED UTILITY LAMP-CTL-TPX12E3065  
 Bulb Type: LED-SIGNAL

Report Date: 2012-05-12  
 Customer: VISIONX  
 Emax (Lux): 144.48  
 Coordinate: -0.087, 0.000  
 Luminous Flux (lm): 3675.0

*Lux GreyScale - Illuminance in Vertical Plane - Parking Lamp*

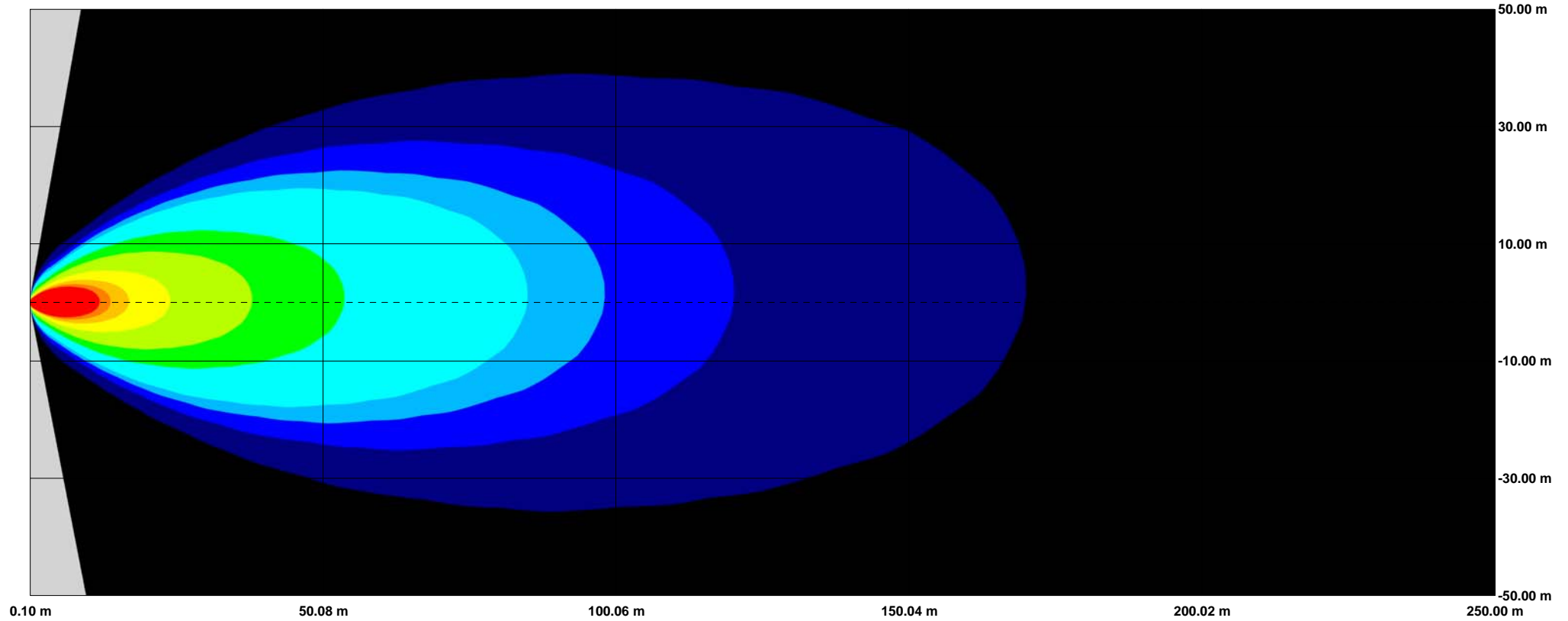


Tested By: \_\_\_\_\_ Checked By: \_\_\_\_\_ Approved By: \_\_\_\_\_

Report Number: MCA-12-05-3165  
 Part Number: CTL-TPX12E3065  
 Part Number: CTL-TPX12E3065  
 Part Name: LED UTILITY LAMP-CTL-TPX12E3065  
 Bulb Type: LED-SIGNAL

Report Date: 2012-05-12  
 Customer: VISIONX  
 Emax (Lux): 21637  
 Coordinate: 0.613, 0.000  
 Luminous Flux (lm): 3675.0

IsoLux - Birdseye View - Parking Lamp



Illuminance Type: Vertical  
 Test Item Tilt Angle (?): 0.000

Test Item Height (m): 0.100  
 Test Item Offset from Road Centre (m): 0.000

Tested By: \_\_\_\_\_ Checked By: \_\_\_\_\_ Approved By: \_\_\_\_\_

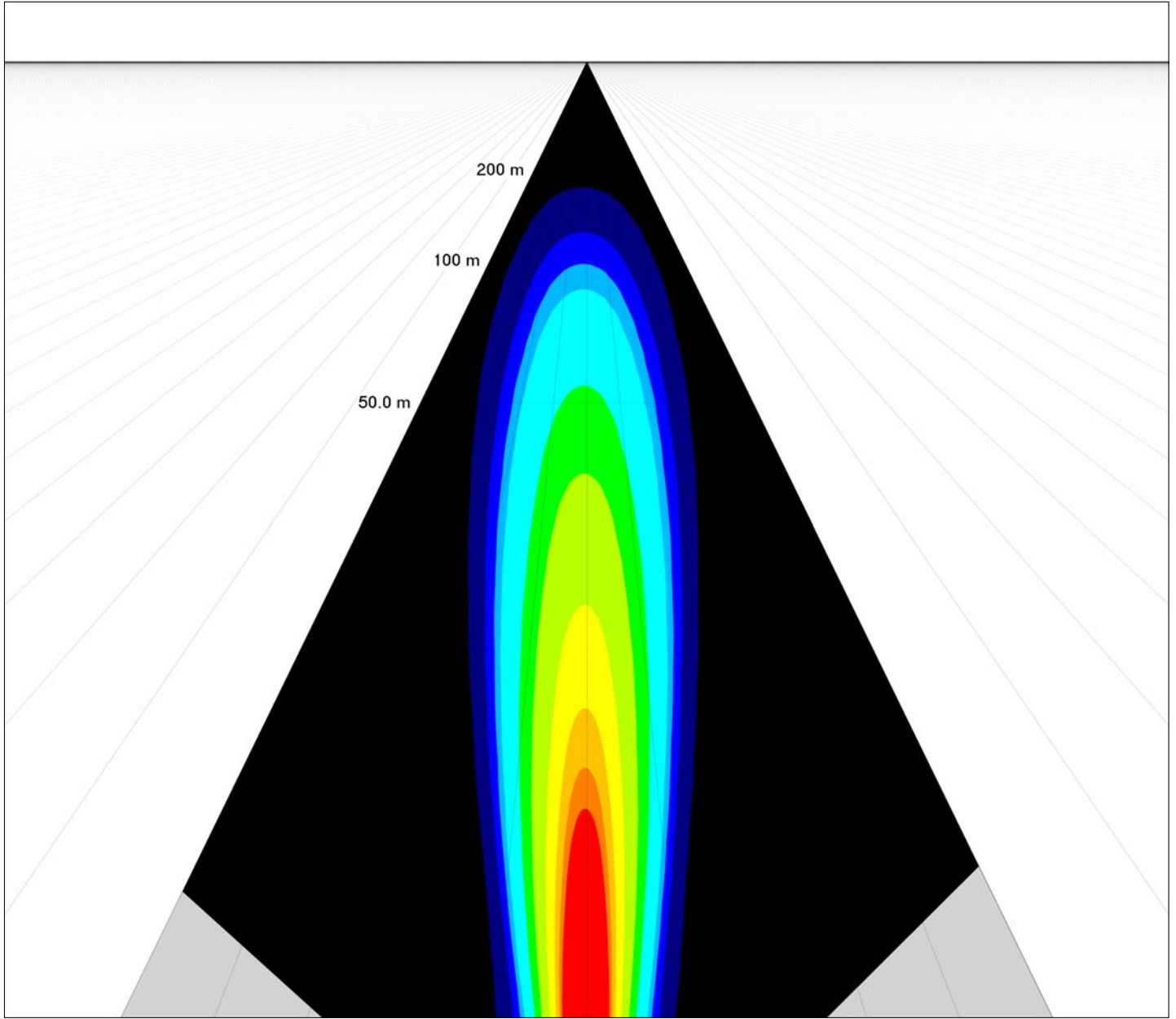
Report Number: *MCA-12-05-3165*  
 Part Number: *CTL-TPX12E3065*

Report Date: *2012-05-12*  
 Customer: *VISIONX*

Part Number: *CTL-TPX12E3065*  
 Part Name: *LED UTILITY LAMP-CTL-TPX12E3065*  
 Bulb Type: *LED-SIGNAL*

Emax (Lux): *22317*  
 Coordinate: *0.567, 0.000*  
 Luminous Flux (lm): *3675.0*

***IsoLux - Driver's View - Parking Lamp***



Illuminance Type: *Vertical*  
 Test Item Tilt Angle (?): *0.000*

Test Item Height (m): *0.100*  
 Test Item Offset from Road Centre (m): *0.000*

Tested By: \_\_\_\_\_ Checked By: \_\_\_\_\_ Approved By: \_\_\_\_\_